

# Collaborative Care Management (CoCM)

## IMPACT STATEMENT

December 2021 – June 2023

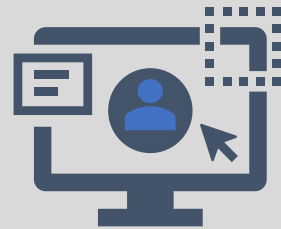
### Program Overview:

Collaborative Care Management is a systematic strategy for treating behavioral health conditions within the primary care setting through integration of care managers and psychiatric consultants.

271 Clinics Launched



15,665 Patient Referrals



9,761 Patients Cared For



28% of Providers Currently Referring in past 30 days



**47.9%** of patients with anxiety discharged with subclinical score



Subclinical= patients with a moderate (10+) GAD7 baseline score having no suicidality at discharge and final survey score < 10

**45.0%** of patients with depression discharged with subclinical score



Subclinical= patients with a moderate (10+) PHQ9 baseline score having no suicidality at discharge and final survey score < 10

**63.2** Net Promoter Score



N= 926

*Indicates patient's likelihood to recommend services*

### Adoption of Payer Codes



- Commercial: SB178 requires commercial insurance to cover CoCM
- Medicaid: In progress



- UHC: Contracted rates of 120% National Medicare (effective 7/1/23)
- Home State: In progress
- Healthy Blue: In progress



- Reimbursement for all payors effective 11/1/23, including Managed Medicaid when it goes live 4/1/24